

---

# Manufacturing Extension Partnership

National Institute of Standards and Technology

Roger D. Kilmer, Director





**MEP** • MANUFACTURING  
EXTENSION PARTNERSHIP

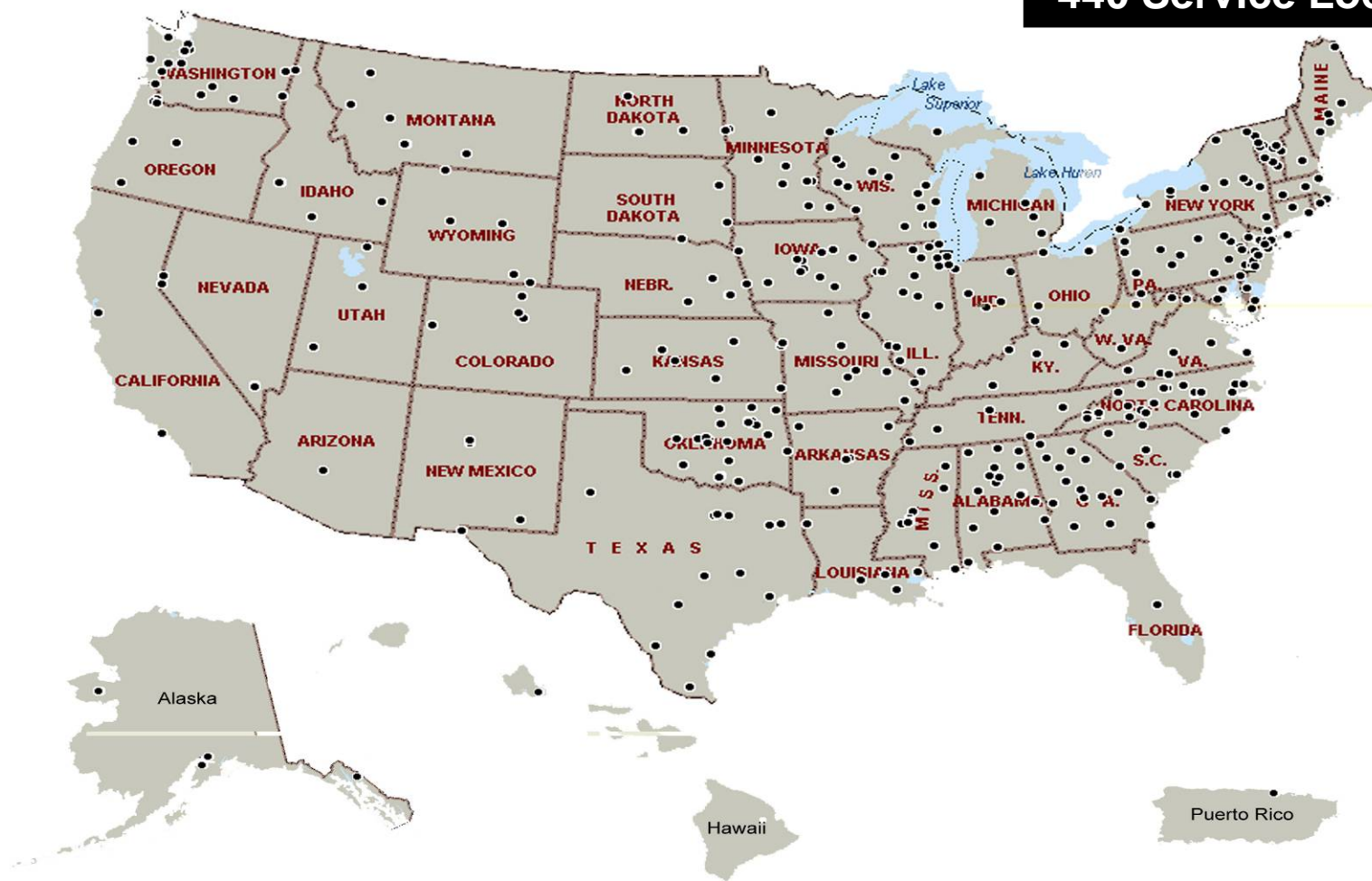
## Mission Statement

“To strengthen the global competitiveness of US-based manufacturing by providing information, decision support, and implementation of innovative approaches focused on leveraging technologies, techniques, and business best practices.”

# MEP Office Locations

[www.mep.nist.gov](http://www.mep.nist.gov) – or – 800-MEP-4MFG

59 “Centers”  
1600 Field Staff  
440 Service Locations



## What MEP Does

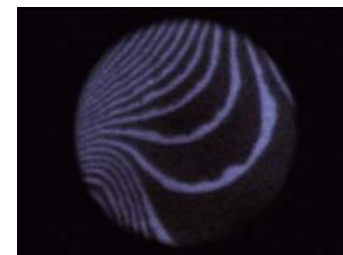
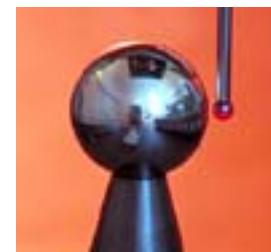
- Focus on meeting manufacturer's short term needs, but in context of overall company strategy
- MEP Center areas of common strength
  - Engineering Services for products and processes
  - Growth Services – new or expanded market opportunities
  - Lean Manufacturing
  - Quality Systems
  - Environmental Services
  - Workforce Development
- Working directly with over 24,000 manufacturing companies a year\*

\*Based on FY2006 MEP Center reported performance data.

## What we all know - *Manufacturing is changing!*



- Globalization is here to stay, and most U.S. manufacturing firms must adapt to increasing competition.
- Innovation (product, process, service and business model) will be critical for enterprise survival and must be managed at several levels.
- Supply chains are becoming more global, more exclusive, and more competitive.
- Technology advances will continue to be both incremental and disruptive. Unfortunately, adoption rates at smaller firms still lag those of larger ones.



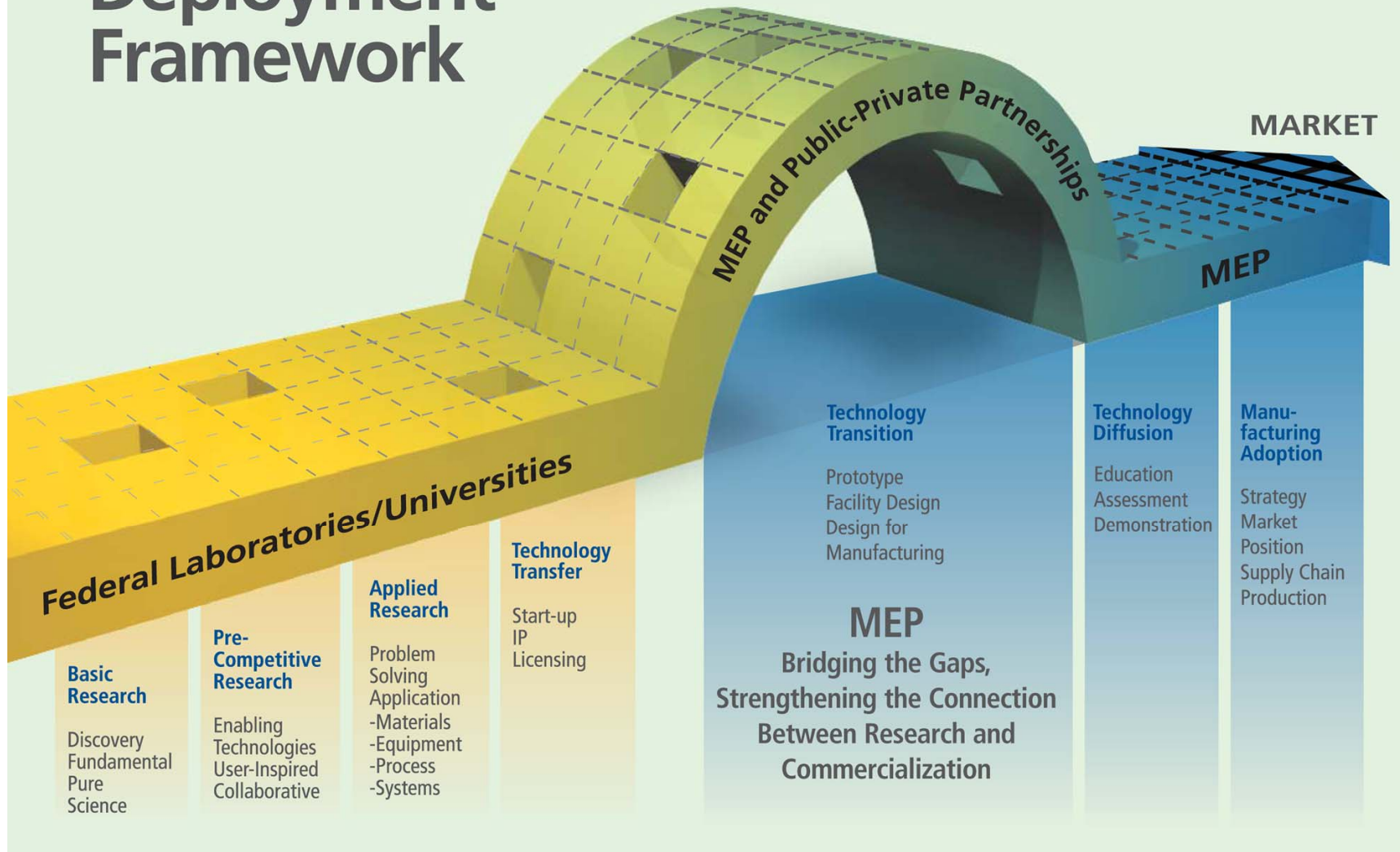
# Innovation and Technology Deployment

## MEP Growth Services

- Providing Manufacturers with Choices for Growth is the Nucleus of our Approach to Innovation
- Promotes Top Line Growth using a Structured Process
- Pillars of Growth
  - New Sales
  - New Markets
  - New Products
  - New Business Models
- Eureka! Winning Ways is MEP's first growth strategies product line



# Technology Deployment Framework



## Additional Information



MTES - Maryland Technology Extension Service

[www.mtech.umd.edu/MTES/](http://www.mtech.umd.edu/MTES/)

Regions – Potomac, Chesapeake, and Eastern Shore

<http://www.mtech.umd.edu/MTES/offices.html>



NIST MEP

100 Bureau Drive, Stop 4800

Gaithersburg, MD 20899

(301) 975-5020

[www.mep.nist.gov](http://www.mep.nist.gov)